



RUSBOGEN

Freshmen Orientation 2016



Polyteknisk
Forening

1

Welcome

2

Freshmen Orientation

3

Polyteknisk Forening

4

The Study

5

DTU

6

Ballerup Campus

7

Lyngby Campus

8

Dormitories

9

Clubs & Organisations

10

Nice to Know

Colophon

Publisher:

Polyteknisk Forening
Anker Engelunds Vej 1
DTU building 101E
2800 Kgs. Lyngby
Tel: 77 42 44 44

pf@pf.dk

Rusbogen 2016-17 is published with financial aid from Technical University of Denmark, DTU.

Editorial staff:

Louise Green Pedersen
Anne Sloth Bidstrup
Pernille Bendsen

DTP:

Editorial staff

Print:

Narayana Press

Edition:

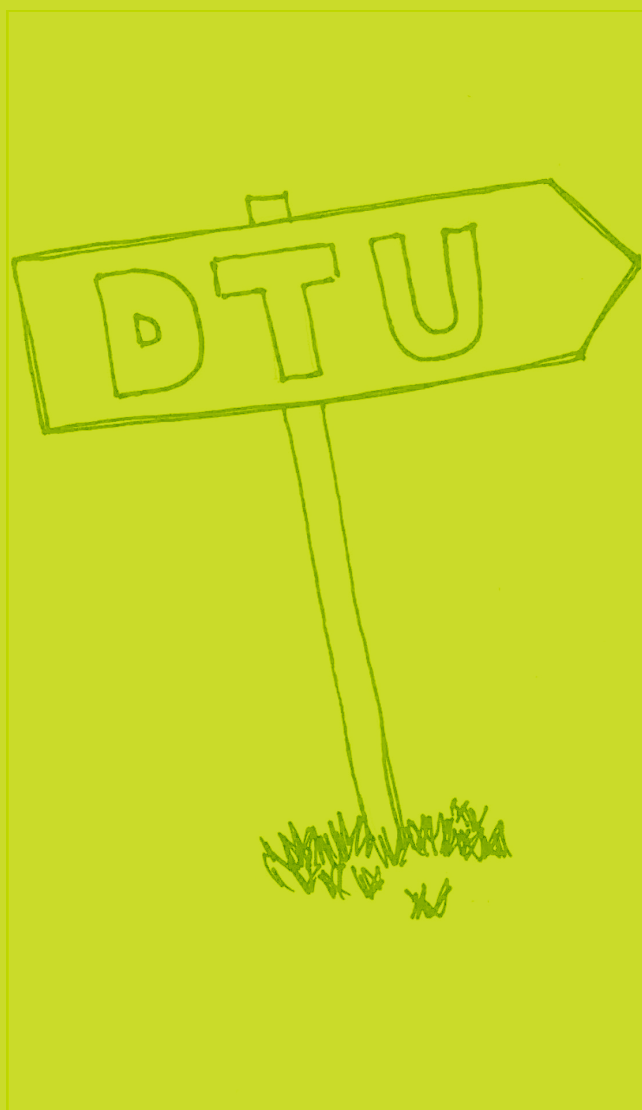
2.500 pcs

Advertisement:

IDA
Rambøll
Polyteknisk Boghandel
S-Huset
PF

Remarks:

rusbog@pf.dk



1 Welcome

Dear new fellow students

This booklet has been made and given to you even before you start your studies to give you an idea of DTU, PF and your new study beforehand.

In Rusbogen 2016 you can read about the history of DTU, the study structure, social life and what options you have of getting involved in clubs and organisations. In the book you also find more practical information such as transport to, from and between campuses, information on culinary experiences, SU (State Education Grant), dormitories and where to find the library or the Study Information Center.

We hope that you will benefit from the book before you start, and that you will also consult it as a reference later in your studies if you want to explore the opportunities at DTU even further when everything is not new and unknown.

A complete version of Rusbogen also exists as an e-book. It is in Danish, but you might still find some of the information useful.

Enjoy your reading!

Yours sincerely



Louise Green Pedersen, Pernille Bendsen and Anne Sloth Bidstrup

Polyteknisk Forening welcomes you

Dear all new students, welcome to DTU!

Welcome to a world class engineering education, and welcome to Polyteknisk Forening (PF), the student union at DTU. You have chosen an education where you will face an exciting future with the chance to tackle the problems of the world and receive the recognition that follows.

On behalf of PF, I would like to give you a warm-hearted welcome to DTU and to an active student environment, where you have the possibility to engage and gain influence.

In PF we are proud of our Freshmen Orientation. Many new students such as yourself come from far away, but no matter where you come from, you have a chance to make a fresh start at DTU – for better or worse. It is

important that you receive a good introduction to the fantastic student environment we have at DTU.

Finally I encourage you to read this booklet if you at some time during your studies have doubts about how things work or want to embark on something new. Remember that you are always welcome at the PF Secretariat if you have any questions.

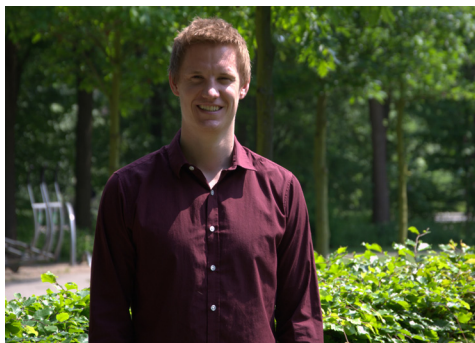
PF wishes you best of luck with your new studies!

On behalf of Polyteknisk Forening



President of PF

Sebastian Molbech Hansen



Welcome

The President of DTU welcomes you

Dear new students at DTU

This year I have the special pleasure not only to welcome all of you coming from the Danish school system, but also to you who arrives from other countries to get your education in General Engineering. You will all from day one become part of an international educational environment that I hope will be an inspiration to you all.

DTU has set a goal - we want to be ranked among the five best technical universities in Europe by 2020 and I am looking forward to seeing all of you young, ambitious people be a part of this development.

DTU puts talented educators at your disposal, while offering surroundings and facilities, which year after year get top marks. We make sure, that the prerequisites are met so you can expand all of

your potential and develop into the engineers that society are so greatly in need of. You will support the development in technology, which is the basis for sustainable growth, a job creation and a healthy economy in society.

Yes, we do expect a lot of you. And we know it takes hard work to complete an engineering degree. But remember to enjoy your study time - rejoice in being together and the many options you have for forging friendships across disciplines and nationalities.

Good luck with your studies at DTU.



President of DTU

Anders Bjarklev



Welcome



2 Freshmen Orientation

What happens at the beginning?

Starting a new study and on a new university can be tough, but you are not alone. Every year more than 2000 new students begin their studies at DTU.

In this chapter you can find information on all the activities arranged for you and all the other freshmen of 2016.

This year at DTU 28 introduction trips are arranged for the new students, and common for all of them are that you get to know your future fellow students and are being prepared for your future studies with different social activities.

In this chapter we hope to be able to give you an overview of the major events that await you on your first semester, including a brief introduction to the Introduction Programme and the Introduction Trip.

Freshmen Orientation at DTU

As a freshman at DTU you will have the opportunity to participate in the Introduction Day and sign up for an Introduction Trip "Rustur", both of which will help to give you a good introduction to your new study.

It is really important for DTU and PF that the new students get a pleasant start to their studies. Every year about 230 vectors (tutors) are educated before the semester starts, to assist you through your first semester.

Introduction Day

The Introduction Day is a special day prior to semester start. You will meet your new classmates from your study programme and your vector group. You will also get a tour on campus to ensure that you quickly find your

way around and feel at home at your new place of study. During the Introduction Day there is both a lot of fun, academic and social activities where you get to cooperate with your new classmates, think creatively and get to know your fellow students.

All new Bachelor of Science (BSc) and Bachelor of Engineering (BEng) students are officially welcomed to DTU by President Anders Bjarklev, Dean of Undergraduate Studies Martin Vigild and the President of Polyteknisk Forening Sebastian Molbech Hansen.

Your vector group

When starting at DTU all freshmen are divided into so-called vector groups consisting of approximately 8-15 freshmen and a vector. In this group you will have a weekly lunch meeting which colloquially are called "cake meetings". At these meetings, your vector will inform you about what is happening at DTU and you will have the opportunity to ask your vector for advice. These cake meetings will be an offer at the entire first semester and the beginning of the second semester to ensure that the



KABS 2016



new students have a pleasant start at DTU.

KABS (Coordinators of the Freshmen Orientation)

KABS is a mixed group of 29 students who provide a framework for the DTU introduction programme. There is a KABS from each study programme, and you will meet your KABS at the Introduction Day. They have the main responsibility for the vectors and makes sure that you get the best introduction. You can ask KABS about everything and they will do their best to help you.

Introduction Trip

There will be a total of 28 Introduction Trips this semester start at DTU, which range in size from 35 to

about 120 freshmen. Two of these are weekend trips, where one is non-alcoholic. The remaining trips takes place from monday to friday in the last week in August.

All trips have a coordinator (KABS) and a number of vectors. But they also have a kitchen team consisting of 3-5 students who provide food and often funny features on the Introduction Trip.

On all Introduction Trips the Board of Polyteknisk Forening, The Danich Society of Engineers (IDA) and the President and Dean of DTU will visit.

Sincerely

The vectors and KABS16

Events in your first year

In the following pages the many exciting activities that are taking place during your first year are described. The full concert plan can be seen on www.pf.dk/Eventkalender.

Semester Start Party

This great party kickstarts the autumn semester every year. Giant tents are put up outside building 101 at Lyngby Campus where the different study lines come together and make the craziest theme parties. You can in one tent find yourself at a beach party while the next you are in a castle. The party starts with dinner in the respective tents after which the party goes on with DJ's and other exciting entertainment. All of this happens at the first Friday of the first semester week (the 2nd of September 2016).



Rusjoint

Every semester a series of concerts called joints are hosted by PF. The Freshmen Joint, "Rusjoint" is a special celebration for the new

students, their vectors and KABS. It is customary for the vectors to organise a dinner for the Introduction Trip before the concert. Rusjoint is this year Friday in the third semester week (16th of September 2016).



The October Party

The October Party is another proud tradition that also lives at DTU. With big long tables, girls serving beer in 1L mugs wearing Heidi costumes and lots of tyrolean music it is almost like being at "Oktoberfest" in Germany. Wear your "lederhosen" or your Heidi costume, and we will see you in the S-House.

The Fun and the Fitness Run

Get out your running shoes, for whether you are seriously jogging or running with beer PF arranges a setup for you! In the week leading up to the autumn holiday two events are organised. On thursday the more serious Fitness Run is held, where you run 5 km around DTU Lyngby Campus. This is a unique opportunity to discover exactly

how great the campus is while getting a little exercise. On Friday a little less serious Fun Run is hosted. It brings together several hundreds of people, wearing costumes, and then you "run" from Happy Hour to Happy Hour in the different Friday Bars at Lyngby Campus.

Music

The Student House is notorious for their concerts. But besides the big concerts (Joints) that are held a few times each semester in the Oticon Hall, a series of free Friday Rock concerts are held in Kælderbaren. In general, the S-House is known to lure some of the best Danish bands, but also to find some of the hottest up-and-coming bands. The last few years the following bands have played at DTU:

Dúné, Turbo Weekend, Carpark North, Nabiha, Alphabeat, Kongsted, Lucy



Love and Power Corridors.

PF Football Tournament

PF arranges a football tournament each year on a Saturday in the 3-week period in June. There are leagues on two levels so you can make a team with your



friends no matter how good your football abilities are. If you just missed the selection for the National League with an inch you can run for the Professional League. However, if you are not that fit with a ball, do not worry - in Beginners League there is room for everyone. Who gets their name on the prestigious trophy? Come along and we will see!

PF Open House

PF has a number of clubs (see section 9 in the E-book for descriptions of each club). In October there is an opportunity to meet the clubs on their premises during the lunch break. This is an unique opportunity to come and talk with a lot of the club members and hear what they are doing and possibly join a club or three.

Study trade fair

PF hosts a study trade fair where it is possible for students to meet PF, IDA and some local businesses. In addition, there will be representatives from various companies that can provide a good offer on study equipment and other exciting things.



3 Polyteknisk 3 Forening

What is Polyteknisk Forening?

Polyteknisk Forening (PF) is the Student Union at DTU.

In PF we work to represent the students at DTU and it is our overall goal to improve our conditions as students. This applies to education, study life, social events and the Freshmen Orientation. But it is not only your study life at DTU that are relevant to PF - it is also your conditions at dormitories that we work to improve, among many things.

Whether it applies to university legislation or teaching skills, study or housing policy, our decisions are independent of party politics and religion, but is taken on the basis of the Student Councils, which consists of nearly 500 students. What is PF? YOU are PF!

Organisation

What is Polyteknisk Forening?

PF can very briefly be described as a student union formed by the students - for the students. So whatever interests you may have, PF is a union that is there for you. The union is run by volunteer students that engage themselves academically, politically and socially in the student life at DTU.

Less short: In 1845 a student at the Polytechnical College wrote a letter to the king of Denmark, which included the statutes of the student organisation at the Polytechnical

College and at the end of the year, PF was officially created. With more than 170 years behind us, PF is also the oldest of all student organisations in Denmark. Today, Polyteknisk Forening's main objective is still to represent all the students at DTU in all aspects of their study life.

PF works to represent the students at DTU and nationwide, and it is our goal to improve all students' conditions. This includes education, study life, social events, housing conditions and Freshmen Orientation.



PF Banquet 2016 (For all volunteers in PF)

The 3 dimensions of PF

PF is the oldest student union in Denmark - actually older than the Constitution - but although it has changed a bit over time, the purpose is still the same; to safeguard the students' interests and make sure that the study programs at DTU are as good as possible in every way. PF consists of 3 dimensions to accommodate all interests that students at DTU may have.

Academic

In the academic dimension, PF works to ensure that the study programs at DTU have the necessary quality. This happens partly in The Study Boards in the different departments (ISN), where courses for the individual departments are reviewed by students and teachers for possible improvements, and partly through a collaboration with DTU's management and study program administration where we try to find the best solutions to teaching methods, exam forms and summer courses.

Political

In the political dimension PF works to put the engineering students' academic and student environmental interests on the agenda, locally and nationally. PF organises panel discussions with politicians to put the relevant

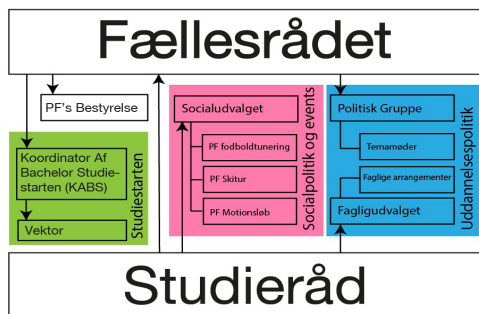
issues on the agenda and invite politicians to come by at elections. We also ensure that the students' voice are heard locally at the university by setting representatives to DTU's Board and the President's Academic Council. Whether it applies to university legislation, teaching skills, study or housing policy, our decisions are independent of party politics and religion.

Social

In the social dimension PF works to ensure a good study life - in the broadest sense. It concerns both the state of the facilities and premises at DTU, that there are working places where you can immerse yourself in your study, and that you can get a decent place to live. Additionally PF organises a lot of different social events such as the Fun Run, a skiing trip and a surf camp, as well as major concerts so you do not get bored while studying at DTU.

The Study Councils

The Student Councils are a good place to start if you would like to take responsibility for your study program or arrange different events. The meetings are always open and non-binding, and every one is welcome to join and see what is happening.



Fællesrådet (FR)

Fællesrådet, (Directly translated to The Joint Council), is often just called FR. It can be described as PF's "parliament" and is the place for you who would like to have a say in what the union makes as a whole. FR is the highest body in the organisation of PF, and is where all the major decisions are made.

The Social Committee

The Social Committee is the place for you who would like to make sure that the social study environment at DTU is top quality and would like to participate in arranging major events.

The Academic Committee

The Academic Committee is for you who are interested in working with the quality of the education at DTU. The Academic Committee discusses and determines PF's position on academically relevant topics.

Political Group

The Political Group is for those who have an interest in shaping the political views of PF. The group is a task force of 10 people who meet every two weeks to discuss student political related issues.

The Board of PF

The Board is responsible for the daily operation and management of PF and they make sure that the PF policies are implemented. This includes ensuring the organisation, information flow and coordination between the various committees in PF. It is also the Board who are in contact with the DTU administration and management. The Board are elected for one year at a time by Fællesrådet. If you have any question or have an idea, you are always welcome to come by the office or send them an email at bestyrelse@pf.dk.

What PF offer the students

The PF Hall

The PF Hall are located at the Student Center at Lyngby Campus, just up the stairs from the S-House and the canteen in building 101.

The hall contains many vital parts of PF. In addition to the many meeting rooms, which can be booked for free of all PF members, the hallway also hosts KABS before and during the execution of the Introduction Week.

Fortunately, it is not only serious work you find when you walk up the stairs and open the door. The clubs have their common club room up there where they can relax and spend time to pursue their hobbies.

Last but not least you will also find a large activity room with workspaces and a large couch for relaxation or contemplation as well as a large kitchen that is used by all the volunteers in PF to cook dinner before meetings and so. This can also be booked free of charge at the PF Secretariat.

The PF Hall at Ballerup Campus is constantly evolving, which includes plans to establish a kitchen, a study hall, more club rooms and meeting rooms. The hallway is above the canteen on the first floor. Currently there

is both a large and a small conference room and a secretariat.

The Board hallway

The Board hallway is located right next to "Pejsestuen" and "Læsesalen" in the S-House at Lyngby Campus, and here you will find both the S-House office and the Board office. In the joined office the manager of the S-house, Erik and his student Søren works, along with the purchasing and booking department. The IT-, PR- and CREW-department also work in the joined office with other volunteers that ensure that there is time for celebrations and study environment in the S-House.

In the bottom of the Board hallway you will find PF's Board office. Here, the door is always open if someone is there and you are always welcome to drop by for a chat about our student activities or if you just want to say hello.

PF Secretariat

At the secretariat you will find several offers that you as a student might find handy during your time at DTU. This includes the opportunity to make cheap copies, making color print, bind in reports, purchase of transparencies, spiral ridges and



Kaffestuen, Lyngby Campus

much more. It is also where you can join PF and/or The Danish Society of Engineers (IDA), if you have not already done so. At the secretariat you will always find one from PF's board present along with our secretary, Inge, who can answer all questions.

The secretariat at Lyngby Campus is located by the S-House in 101, and it is open

Monday at 9:15 to 15:00,
Tuesday to Thursday
8:30 to 15:00 and
Friday 8:30 to 14:30.

The secretariat in Ballerup is located behind the S-House and have a little more fluctuating hours from semester to semester. The opening hours can be seen at the door, and when we are there you are more than welcome to say hi.

Events

In addition to the celebrations organised in the S-House, PF also arrange several other events. Among these are the annual Running

event (both a serious fitness run around Lyngby Campus, and a frivolous fun run to the different Friday bars), the Semester Start Party, a half marathon between Ballerup and Lyngby Campus and an annual Revue - to name a few. PF also organises PF skiing trip, northern Europe's largest (and one of the cheapest) skiing trips with nearly a thousand participants.

Become a volunteer

PF are always in need for more active volunteers, and there will also be room for you. PF's work is based on student volunteers who want to make a difference.

If you have a good idea or a cool concept we would like to hear about it. You can find contacts to many of the different groups of PF in this book, and you are also welcome to contact PF's Board either by coming by our office, or on bestyrelse@pf.dk.

PF's website

PF's website (www.pf.dk) contains much information



Fremdriftsspillet - a game developed at the Political Group for "Folkemødet" 2015

about the union. If you want to make a difference as a student in PF and have an impact on your studies, then this is where you can find information about the individual study councils and committees as well as important information about the organisation such as statutes and annual reports. You can also view the calendar with the upcoming events, including concerts and Council meetings.

Student Politics

In PF we make many different things: we organise parties and concerts, operates a student-house, conduct study help sessions before

the exams, plan an annual skiing trip and many other things which you can read about in this book.

But our main task will always be to fulfill the students' interests, and this is where the student politics comes into picture. Through student politics we get a say in decisions that affect education and study environment at DTU, to ensure that students are heard. We also cooperate with many other student organisations, both nationally and internationally, to coordinate our activities and make sure that all students receive the best possible conditions throughout their studies.

What is a Student council?

PF Student councils meet once a month and are responsible for the students' academic, political and social interests. There is a council attached to each study program. This is the opportunity to help make a difference for your study program, whether you think student politics is the coolest or think it would be fun to help arrange social events..

The Student councils have representatives in several Study Boards (ISN), which helps to ensure high academic standards in our education, including course evaluations of ongoing and completed courses. In addition, the Student councils are represented in several of

PF's committees; the Social Committee, the Academic committee, Political Group and Fællesrådet.

The councils have different traditions and will in particular organise a variety of social events such as Christmas parties and annual cabintrips - it differs from council to council.

As a member of a Student council there is great opportunity to get to know people from different year groups and programs at your department. There is a great unity in councils and members include every one from freshmen to students who will soon have completed





Polyteknisk Forening



Studieliv

Studieårene er som alle siger, sjove men også hårde. PF har en række tilbud der kan gøre det lidt nemmere. Det første du møder er Studiestarten, hvor vi giver dig en god introduktion til DTU og livet som studerende. Når du så er igang, har vi klubber og sociale arrangementer men også faciliteter der kan hjælpe dig som f.eks. print, indbinding, og studieceller.



Arrangementer

Klubaftener, politiske møder, motionsløb og skiture. PF har rigtig, rigtig mange fede arrangementer man kan deltage i. Og hvis man vil, kan også være med til selv at planlægge dem! Tag et kig i kalenderen eller hold øje med opslagstavlerne.



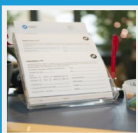
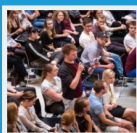
Koncerter i S-huset

S-Huset arrangerer de bedste fester og koncerter - både små FredagsRock koncerter og "Joints" hvor f.eks. Magtens Koridorer, DJames Braun, Dr.Bombay og Duné har spillet.



Studierådene

Der findes et studieråd for alle retninger. Studierådene mødes ca. en gang om måneden og snakker blandt andet om kurserne og laver sociale arrangementer for retningen. Det er nemt at komme med, tag fat i din rådsformand eller vektor.



Dine fordele

Der er mange fordele ved at være PF medlem, foruden at støtte den organisation der arbejder for at gøre dit liv på DTU bedre. Som PF medlem åbner der sig nemlig en verden af muligheder for venner, netværk og kompetencer. Derudover har vi en række konkrete fordele - både rabatter og tilbud der gør studielivet nemmere.



4 Your study

Your new study

In this chapter of the book you can read about being a student at DTU and what is expected of you as a student. You can get information about studying engineering in general; for example on how the schedule is constructed and how the study is progressing.

You can also read about respectively the BSc and BEng program. You can read even more about the study programs in DTU's study catalog.

Additionally, in this chapter you get some tips for surviving on SU and the possibility of support for students with special needs.

Welcome at DTU

A study of engineering with many options

Engineering is a full-time study, and we are committed to providing flexibility for a good course of study. At DTU, there are many opportunities to engage in different ways during the study, for example by projects in collaboration with companies, participation in student competitions and various innovation activities. Use the options that are possible - also the ones for studying abroad - then you will be in a strong position when you start your career as an engineer.

The flexible study

At DTU we offer a very flexible study which offers good opportunities to arrange your study throughout the year. The academic year consists of two 13-week periods with teaching (spring and fall), and four 3-week periods in January, June, July and August. The periods in June, July and August are offered as Summer University and especially the periods in July and August can be used to study in a different way than usual: here you can for example work with research or sign up for courses with activities outside the usual framework on campus.

A study life of world-class

DTU have a strong focus on the students' well-being, an attractive campus and a good educational environment. As a student, you have many opportunities to directly influence the study environment at DTU.

In DTU's study-life-fund, the "noget-for-noget" Fund, you and your fellow students can apply for money to improve the study environment if you have a great idea for new initiatives or facilities.

Each year DTU's students can nominate lecturers for the award as Lecturer of the Year. The award has been formed to praise good teaching methods and is given to honor the lecturers who really shines in their field.



Director of Student Affairs
Jørgen Jensen

Generally about the study

The academic year at DTU

The academic year at DTU consists of two semesters, an autumn and a spring semester. Each semester begins with a 13-week period, followed by an exam period and finally ends with a 3-week period. The main part of the teaching lies in the 13-weeks period, divided between typically 3-6 courses depending on workload and structure of the course. The 13-week period starts around 1st of September and 1st of February, and exam periods, usually lasting about 3 weeks, are located respectively in December and May. The dates of the examinations are determined by which module a course has been placed in, and the exam date is therefore already known when you sign up for the course. The project period lasts 3 weeks and are placed immediately after the exam period in January and June. Here you work intensely at one course, and get the opportunity to really concentrate on the course. It is therefore often courses with experiments or project courses of different variation that you attend in the 3-week period. DTU also offers Summer University with the opportunity of 3-week courses in July and August. Registration Deadlines, start and end dates for the indi-

vidual periods can be found on www.portalen.dtu.dk under "Info Site for students".

Holidays

DTU has the same public holidays as the rest of Denmark. Summer vacation is a bit longer and lasts around 9-10 weeks. The autumn holidays are in week 42, while the winter holidays are in week 4 or 5 depending on the placement of the 3-week period in January and the beginning of the semester. Summary of holidays etc can be found on the "Info Site for students" website for coming semesters.

ECTS points

As part of a European action called the Bologna process DTU is surpassed to measure all courses in size from the European Credit Transfer and Accumulation System (ECTS). A full-time year of studies consist of 60 ECTS points on this scale.

Workload and estimated time consumption is used to estimate ECTS valuation. The estimated time consumption includes the time spent attending classes and time spent on preparation and any reports, examinations and the like. A rule of thumb is that if 4 hours of scheduled classes is planned each week, you can ex-

pect 4-5 hours of preparation a week and/or subsequent exercises and an exam at the end.

The vast majority of the courses at DTU are either 5 or 10 points equal to 4 and 8 hours of scheduled class per week for 13 weeks. The 3-weeks-period in January and June is also considered 5 points, - this time the hours are concentrated as 45 hours a week for 3 weeks.

Courses

At DTU about 1,200 courses are offered each year in almost all aspects of natural science. The courses are offered by the departments and the courses most relevant for you will therefore typically be offered by the department providing your education. However, you can choose freely among all of DTU's courses as long as you fulfill the course prerequisites and pass the compulsory courses before the end of your education. The courses can be found at www.kurser.dtu.dk where each course has a course description. In this description you can for example see the course exam form, number of points, learning objectives and contact information for

the head of course if you have any questions.

Besides the course base there is a study guide with recommended courses for your study program. These are prepared by your department, and can inspire you about which classes to take and in what order it is appropriate to take them. The Study Guide can be found on DTU's website under "Education".

Course quality and evaluation

DTU are working actively to ensure high quality education. An online evaluation is executed after every 13- and 3-week period on CampusNet (The intranet at DTU). Evaluations are subsequently read by the Study Board of the department offering the course. Half of the Study Board members are students at the department and thus the students are heard and problems and shortcomings in the courses are being followed up on. In order to ensure improvement of the courses, many evaluation responses are needed. We hope you all will help by evaluating your courses.

The Modular Structure

	man	tirs	ons	tors	fre
8-12	1A	3A	5A	2B	4B
	pause				
13-17	2A	4A	5B	1B	3B

The 13-week period follows a modular structure with two modules per day. Each module is of 4 hours separated by 1 hour lunch break, see table above. There are five schedule groups each with two modules per week, labeled with a number from 1-5. The schedule groups each have a number that can be seen above. The structure of numbers may seem a little confusing, but like everything else on DTU, it is made from a well-considered system. The distribution of numbers ensures that a 10 points subject has lessons twice a week: one time will be a morning class and the second one an afternoon class. In addition, there will be a minimum of two days between the two lessons. This means that as a student you will have time to prepare for both modules in the subject.

The exception of this system is schedule group 5, located throughout Wednesday. This

schedule group is established so that there is an opportunity for a course to last a whole day. For example, this can be an advantage when time-consuming experiments are to be conducted.

Each module has besides a number also a letter in which the first half of the week is called A and the other half B. This is due to 5 points courses, as these only fills half a schedule group. In addition to this, E for "autumn" and F for "spring" are used so that courses held only in autumn or spring, can be separated. If a course for example is located in module "E2", it means that the course is 10 points and is in schedule group 2 in the autumn semester and teaching will take place on Mondays from 13:00 to 17:00, and Thursdays 8:00 to 12:00. Similarly, "F5A" is a spring course at 5 points located Wednesday before lunch.



5 DTU

Welcome to DTU

About 5,000 employees and more than 10,000 undergraduate and graduate students is attached to the Technical University of Denmark. About 10,000 of these people spend their days on DTU Lyngby Campus and 2,500 spend their days on DTU Ballerup Campus.

DTU offers help and guidance for their students. there are many places where you can get help and guidance. In this chapter you can read about the many counseling centers, how they can help you and when they are available. You can also read about DTU's libraries, bookstores and sustainability at DTU.

Transport between campuses

Luckily there are several different ways to get back and forth between Lyngby and Ballerup Campus. Here is a brief description of some of the possibilities.

Car

If you are in the fortunate position to have a car, it takes 15-20 minutes.

Bus

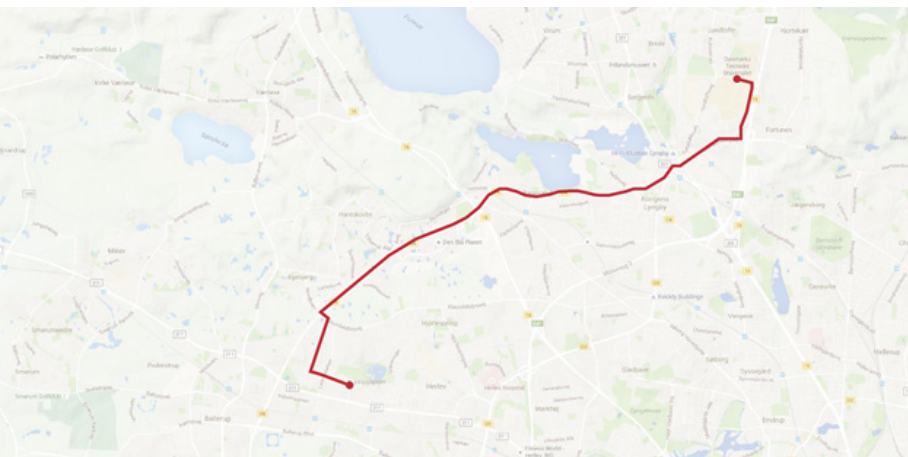
Additionally, there are different bus possibilities. The direct line is 40E, in addition you can take change at Herlev Bycenter between 350S to 30E or 300S. By bus it takes about 40 minutes.

On bike

If you do not have a car and the buses do not fit or if you need some fresh air, you can take the bicycle. Via various bike trails there is 13 km between the two campuses and the trip takes about 40 minutes to commute. The cycle route can be seen in the image below.

On foot

It is possible to run the route too. You can use it to prepare for PF half marathon going from Ballerup Campus to Lyngby Campus with a detour through Hareskoven.



The Study Information Center

Study Information Center

The Study Information Center is the place where you as a student can get help with all the things which does not concern the academic part of your education. The Study Information Center hosts three functions (Study Counselling, the SU-office and the Student Operations) gathered behind one door, to make it as simple as possible for you to get answers to your questions in correlation with your studies at DTU - it can be anything from SU, transcripts, help with study planning and more information about where to find the answers to all your questions.

You find the Study Information Center at both Lyngby Campus in building 101A, right next to the front desk and at Ballerup Campus in room D 2.01 in the Study Center.

The Study Information Center is open for personal application throughout the 13-week period, the exam period and 3-week periods in June and August, but are closed in the non-teaching periods, for example, autumn, Christmas and Easter holidays and in July.

Study Operations

The kind of help you get from this office are if you for example forget your password to CampusNet, if you have questions about your student ID card, if you have questions about your transcript or similar. Everything about your registration of exams or your courses are also addressed in Student Operations. Additionally, the unit works closely with the departments at DTU and can assist with creating good contacts and networks between you and the department you are affiliated to if needed.

The Study Operations office has staff in both campuses, and both offices are open weekdays from 10:00 to 14:00.

You can also write to us from your study mail to studieservice@adm.dtu.com.

SU

The SU office at DTU can guide all DTU students in the SU rules and processes applications for SU, student loans, youth card and international scholarship.

This office gives counselling if you have problems

with receiving SU, you must change your SU situation (for example, if you move), student loans or cancellation of some months of SU. You can also view information on www.su.dk.

You can write to the SU office from your study mail to su@adm.dtu.dk or you can contact the SU office in their office hours via telephone or in person. The office hours at the two campuses can be seen on DTU's intranet, Portalen if you search for "SU".

The Student Counselling

At the Student Counselling senior students work as tutors. They can help you with any questions that may arise in connection with the planning and execution of your study, how to interpret the rules applicable to your education and how you should act in connection with credit and dispensation applications and complaints. You can also always talk to them if you have any problems of a more personal nature, and it

is always a good idea to talk to the Student Counselling if you are considering taking leave, shift education or unsubscribe to your study.

All student counselors have client confidentiality and you can talk to them about both big and small challenges concerning your education process. They can assist you with all DTU's study programs.

You can contact the Student Counselling in person, over the phone or via e-mail.

Phone hours 45 25 11 99 on weekdays from 9.00- 10.00 am.

They can be contacted respectively in Ballerup and Lyngby Campus every weekday from 10:00 to 14:00 for personal application.

Contact can also be made by e-mail, here you can write at: studvejl@adm.dtu.dk

We look forward to help you getting the optimal study time!

**BLIV
MEDLEM**
på ida.dk

MAKE IT EASY

BLIV MEDLEM AF IDA OG FÅ MASSER AF FORDELE

I IDA bliver du en del af et stærkt fællesskab, der hjælper dig godt og grundigt igennem din studietid. Vi tilbyder bl.a. billige studieforsikringer, arrangementer på dit studiested, en attraktiv studiekonto, netværk og rådgivning. Det første studieår er gratis. Herefter koster studiemedlemskabet 20 kr. pr. måned. Og du kan endda blive medlem i dag!

Læs mere på ida.dk/studerende

KUN FOR INGENIØRSTUDERENDE OG STUD.SCIENT.ER

DTU Library

Find us in both Ballerup and Lyngby - and online!

The library plays a central role for students at DTU, not only for your education, but also as part of the active study life.

The Library

You will find DTU Library at both Lyngby and Ballerup Campus. In Lyngby the library is located in building 101D. In Ballerup you will find the library centrally located in the main building.

The digital library

You have access to the digital library with millions of scientific articles and e-books online - anytime and anywhere. Our search system, findit.dtu.dk, makes it easy to search across the many electronic journals we subscribe to, as well as our many e-books.

The printed library

The printed books you'll find both in the library's basement in Lyngby and partly in the library in Ballerup. Both places have a large collection of subject-related books that can be borrowed home. All textbooks from DTU's courses are also found here - if not available as e-books.

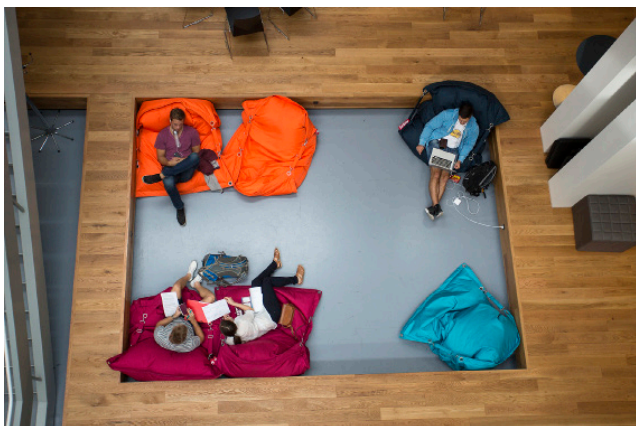
Databar

At Lyngby Campus, we offer a large databar with PC's, printers, scanners, etc. In Ballerup you can borrow a laptop.

Study places and group rooms

Both in Lyngby and Ballerup you will find study and reading spaces and tables for group work, as well as a number of well-equipped group rooms, which you can book online.





Study environment

DTU Library offers varied places to relax and recharge, for example between lectures. It also houses many interesting exhibitions and events.

Guidance and courses

Throughout the day you can get help and guidance of the library staff. You can also make an appointment with a librarian, so the guide can be adapted to your needs. A good place to start is one of the Library courses.

Come by

You are always welcome to drop by and have a chat - whether you study in Lyngby or in Ballerup .

Opening hours
Ballerup Campus
Monday-thursday:
9.00 - 16.00
Friday: 9.00 - 14.00

Lyngby Campus
Staff present
Monday-friday: 8.00-22.00
Saturday-sunday:
12.00-16.00.
Access with student ID
card around the clock
seven days a week - 24/7 !

For more information
check out our website
www.bibliotek.dtu.dk

Welcome to DTU Library

We look forward to
helping you!

Polyteknisk Boghandel

Bookstore for engineering students

Whether you study at Lyngby or Ballerup Campus your study bookstore is Polyteknisk Boghandel.

Here you will find all the textbooks you need through your studies; a rich selection of additional literature, course blocks, ring binders, pens and everything else that you use in your daily life as a student.

Polyteknisk Boghandel is here for you and do what they can to make your study easy when it comes to books including collecting information, making book lists and especially their popular book packages which gathers all the books you need for one semester in a package - ready to take with you. Easy as it gets.

Book packages are offered to all DTU students at the first semester and for the students of Bachelor of Engineering there are also book packages offered at the subsequent three semesters.

Usually both stores have the same books and packages of stock - but you can always check the current availability in the book list on our website, which you can find at the address www.polyteknisk.dk/home/dtu

Locations:

- Lyngby: Building 101 – next to the library
- Ballerup: At entrance 13A

A bookstore for the students

The bookstore has been around since the early 1960s, when students at the Polytechnic Uni (now DTU) decided to make it easier for all students to reach their educational materials in time for the semester beginning.

A collaboration with lectures at DTU ensures the newest information about each course - and ensure that we have the appropriate versions in stock. The bookstore has a booklist guarantee: They guarantee that study books purchased from the store is the correct version and precisely the one syllabus of your course.

Novels and other stuff

The bookstore also offers much more than study materials. Drop by and see the large selection of books on IT, engineering, management - and not forgetting novels, biographies, travel books etc.

10% discount – also on fiction!

As a DTU student you get 10% off all non-discounted books you buy at the Polyteknisk Boghandel. Not only your textbooks, but also on all other fiction and non-fiction.

DTU merchandise

The bookstore is also an official distributor of DTU merchandise. Drop in and see the large selection in DTU branded articles, for example T-shirts, sweatshirts, mugs, bags and much more.

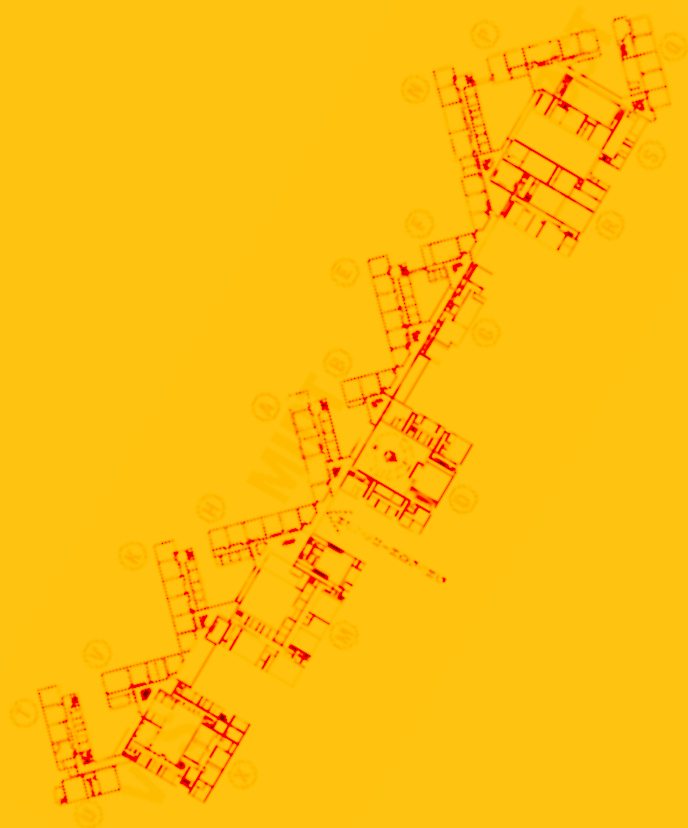
Exceptional bookstore for engineers

Polyteknisk Boghandel is your bookstore - through your studies but also as much when you finish your education. The bookstore is the largest independent technical bookstore and supplies through our B2B department specialized literature to Denmark's knowledge-based institutions and companies.

www.polyteknisk.dk

Outside opening hours, please refer to www.polyteknisk.dk. Here information is available about which textbooks you need for your course with online book list and reserve more than 4 million Danish and English books.





6 Ballerup Campus

Welcome to DTU Ballerup Campus

Technical University of Denmark has about 5,000 employees and more than 10,000 undergraduate and graduate students, of which about 2,500 of these people spend their days on DTU Ballerup Campus.

In this chapter you can read about what Ballerup Campus has to offer - get information about the Friday bar, culinary experiences, the bookstore and transportation.

On Ballerup Campus there are data bars, a library, a bookstore and sports facilities. Read more about the facilities that Ballerup Campus has to offer you and where they are located on campus in this chapter.

Campus structure

Campus structure

Ballerup Campus is located on Lautrupvang in between Ballerup and Herlev about 13 km from the center of Copenhagen.

Unlike Lyngby Campus, all of Ballerup Campus lies under one roof. It is therefore said at Ballerup Campus that; "If you can't find your room and think you have gone too far, then just go in the opposite direction." Ballerup Campus is also equipped with many lifts, which makes the building extremely accessible for disabled.

Main building and centres

Ballerup Campus covers an area of 42,000 m² and is composed of three centers: Western, Central and Eastern. The three centers are an extension of each other where group- and smaller rooms are located north of the main hallway

and lecture halls and the library and the administration is to the south.

The first thing you see when you enter the main entrance, is the large and very bright common area with high ceilings. Here, in the middle of Ballerup Campus, the Study Information Center is situated, along with the bookstore and the library. Towards the east lies Ballerup Campus Canteen, where it is possible to eat lunch in the large open hall. The Construction program and the Center for Admission Courses are also found in the East Center. It is also in the East part that the Friday bar Verner's Kælder and the fitness room are located.

To the west of the main entrance are one of DTU's two bookstores. Here, it is possible to find relevant books, and buy DTU merchandise.





Where can I get help?

In each of the three departments you find an Educational Secretariat. Since the secretariats are directed towards various programs, it is here possible to get help regarding your particular field of study.

Besides the education secretariats the Study Information Center is always helpful with questions of any nature,

ranging from doubts about your study abroad to for more personal questions.

Study life

A large part of the social life at Ballerup Campus takes place in S-House or student bar Verner's Basement. Additionally, several places there are cosy small squares where you can hang out, do group work or eat your lunch.

Food

The main canteen

The canteen at Ballerup Campus is located in middle of the building.

The canteen offers a large selection of food and drink at student-friendly prices. The selection includes a large salad bar, sandwiches, a warm dish and a hot and cold buffet.

The canteen provides breakfast with a large selection of bread, fruit and milk products. In addition, you can buy

snacks, such as fruit, bread and cake. The canteen also has a small range of kiosk goods. It is possible to enjoy good company and good food in hallway next to the canteen.

Opening hours:

Monday - friday: 7.45-15.00

S-House

Opening hours:

Monday-friday: 7.45-17.30.

S-House & Verners Kælder

The Student House, or the S-House colloquially, is one of PF's most well-known establishments.

The S-House is located just opposite the canteen and near the library. The S-House offers a café environment where you can buy breakfast, sandwiches for lunch, soft drinks, snacks and beer at student-friendly prices.

In the S-House, you can also play both PlayStation and foosball and borrow a wide range of cards and board games for free, or just eat your lunch in pleasant surroundings.

In addition to the daily operation, the S-House is also responsible for organizing festivities on campus, latest we held a summer festival in June but there is almost always something in the pipelines - so watch out for info screens and our facebook

page, so you will not miss a thing.

On Friday afternoon the festivities typically move from the S-House to Verners Kælder (Verner's Basement) which is located in - you guessed - the basement facing the marsh at the eastern end of the building - the location provides ample opportunity to use the outdoor areas for all sorts of fun and games in the summertime.

The bar opens at 12:00 Friday and stays open as long as people are having a good time.

If you have a natural interest in arranging and running concerts and other major events, or want to hear more about working in the S-House, you are always welcome to write to Martin Nielsen, shusformand@pf.dk or tel. 77 42 44 92.





Velkommen i Polyteknisk Boghandel

DIN BOGHANDEL MIDT PÅ DTU



STUDIEBØGER & BOGPAKKER

Vi gør din semesterstart meget nemmere



BOGLISTE GARANTI

Vi garanterer at det er de rigtige bøger der er på boglisten. Evt. fejl, rettes uden omkostninger



ANDEN FAGLITTERATUR

Ingeniør teknisk litteratur, biografier, opslagsværker samt populær videnskab – til studie og erhvervsliv



HYGGE OG FRITID

Romaner, biografier, kogebøger, rejsebøger, brætspil, vin, kaffe, slik m.m.



PAPIRVARER

Hvad du skal bruge indenfor: Mapper, papir, tushet, blokke, penne, planchematerialer osv.



DTU MERCHANDISE

Kom ind i butikken og se det store udvalg: T-shirts, bags, rygsække, krus, regntøj, gaveartikler m.m.



WEB SHOP

Søg mellem flere end 4 millioner bøger. Langt fra alle er på lager, men vi skaffer hjem hvad du skal bruge

Polyteknisk Boghandel er en af landets førende specialbogladere indenfor faglitteratur i bred forstand. Vi lagerfører et stort udvalg af bøger, specielt indenfor de tekniske og videnskabelige emner.

Vi leverer også faglitteratur til en række af landets største virksomheder, private såvel som offentlige, så hos os kan du finde de fagbøger, som du har brug for som studerende – og senere i dit professionelle liv.



Husk!

...at du får

10%

studierabat på bøger
– også biografier,
romaner osv.

DU FINDER OS:

Lyngby Campus

Bygning 101-lige ved siden af biblioteket

Ballerup Campus

Ved indgang 13A – Lautrupvang 15

Undgå semesterstartskøen, forudbestil online:

www.polyteknisk.dk


Polyteknisk
Boghandel & Forlag



7 Lyngby Campus

Welcome to DTU Lyngby Campus

The Technical University of Denmark has about 5,000 employees and more than 10,000 undergraduate and graduate students, of which about 10,000 of these people spend their days on DTU Lyngby Campus.

In this chapter you can read what Lyngby Campus has to offer - get information about culinary experiences, IT facilities and Friday bars.

At Lyngby Campus there are a myriad of data bars, a library, a bookshop, a NETTO shop, a newspaper, several residence halls, and sports facilities. Read more about the facilities Lyngby Campus has to offer you and where they are located on campus in this chapter and in the e-book.

Campus Structure

Campus structure

Lyngby Campus is located in Kongens Lyngby, and is a large place with about 100 buildings and a circumference of 5 km, seen in the form of a running route. Finding exactly the right building, not to talk about the right room, can be a bit of a chore. Fortunately, there is a systematic location and numbering system that makes things easier.

Quadrants, buildings and rooms - like a system of coordinates

Lyngby Campus is structured as a coordinate system with 4 quadrants. The quadrants are divided by roads, where Anker Engelundsvej is the x-axis and the avenues is the y-axis (See the map of Lyngby Campus in chapter 10) and numbered 1-4 as in the coordinate system.

All buildings and premises in Lyngby Campus can be identified by a three-digit number, except auditoriums that often only have a two-digit number. For buildings the first number indicates the quadrant the building is located in - building 343 belongs to third quadrant. The

second and third number describes where in the the quadrant the building is located . As the numbers increase , we are moving further away from the origin, also like in a coordinate system. Building 301 is therefore close to the center of the campus in the form of Anker Engelundsvej while building 378 is located in the opposite corner of the third quadrant.

In the room numbering system, the first number indicates which floor the room is on, room 101 is for example on the 1st floor of a building.

Where can I get help?

At DTU Lyngby Campus most administrative tasks are handled in building 101A, and therefore it is often here that you can get advice and guidance. In building 101 you will find both the Study Information Center and the library.

Study life

Many of the social activities at Lyngby Campus is centered in b, 101 around the canteen and the S-House. Around the area there are also small cafes, Friday bars and other social facilities .



Food

As a student, you need energy to the brain during the day; whether you get this energy from your homemade lunchbox, a vending machine or using a canteen, here's a description of the possibilities at Lyngby Campus.

Building 101

The main canteen: Open from 11.00 to 14.00. It offers, among other, hot dishes, a salad bar, sandwiches and a nice selection of drinks. It costs 7 kr per 100 g food for students with student ID card.

The Cafe: Open from kl. 8.00 to 20.00. The cafe is located in connection to the canteen. In the cafe it is possible to satisfy your hunger with breakfast, lunch, freshly made sandwiches, salads, coffee and cakes.

Other canteens

There are other canteens around DTU than in building 101. There are canteens in buildings 342 and 358. They are open from 07:30 to 13:30. These canteens cooperate with the main canteen, which means that they have the same prices.

Kaffestuen and PF-caféen

A good alternative to the canteens are "Kaffestuen" in

building 101 and the PF-café in Building 306. Both are run by the S-House and thus PF.

PF-café : Open 7:30 to 17:15

Kaffestuen: Open Monday-Friday 7:30 to 19:00

The choice of food both places are very similar, and consists of sandwiches, salads, bread, pastry, candy, various drinks in the form of tea, coffee, soft drinks and chilled beer.

Street Food

There are 4 street food stalls around Lyngby Campus.

Zaza Streetshawarma at building 116. Open monday – friday kl. 10-15

The Turkish Kitchen at building 223. Open monday – friday kl. 10-15

Yatai by Jens Rahbek at building 322. Open monday – friday kl. 10-16

7Cocinas at building 414. Open monday – friday kl. 10-18

NETTO

On Kollegiebakken 7 a NETTO is located. It is open every day from 7.00 to 24.00 and works great with a wide selection.

The S-House

The Student House, or S-House colloquially, is one of PF's most well-known establishments. The S-House corporate headquarters is based in DTU building 101 where you will find both Kaffestuen, Pejsestuen, Kælderbaren - The Cellar Bar and Læsesalen - they are all examples of features associated with the S-House in building 101.

Kaffestuen and Pejsestuen

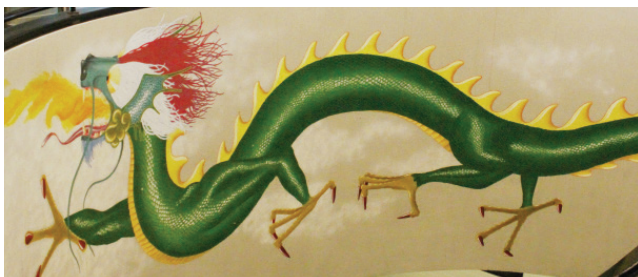
In Kaffestuen (The Coffee Room) you will find a café environment with the possibility of buying various food and drinks on weekdays. Next to this is Pejsestuen (The fireplace room) which is furnished as a living room. In Pejsestuen you have the opportunity to play pool, billiards, table tennis and table football, eat lunch, have a cup of coffee or a beer after your lectures. Pejsestuen is also often a bar and party area Friday afternoon and evening in addition to Kælderbaren so the whole house is part of the party.

Læsesalen

In direct continuation of Pejsestuen is Læsesalen (The reading room). Læsesalen is shielded with sliding doors and provides space for contemplation and is primarily used as a study destination alternative to DTU's library but can sometimes be used for events that are relevant to students at DTU - this could include professional presentations so keep your eyes and ears open.

The PF Café

Besides the headquarters and related facilities, the S-House also runs a small café in Building 306. It has largely the same offer as Kaffestuen and is strategically located close to some of DTU's larger auditoriums so the needed coffee fix is never far away !





Kælderbaren

Kælderbaren (The cellar bar) is located in Building 101, where it is "tucked away" in the basement of Pejsestuen and is the S-House bar at Lyngby Campus. Here you can find a large selection of different beers, many of which typically comes from Danish microbreweries, a wide selection of drinks and generally a nice atmosphere. The bar is open every day, but generally closed on weekends unless otherwise announced.

Joints

In addition to the daily operation S-Huset is also responsible for planning PF's concerts or 'joints' as they are called on a daily basis. The whole house is then part of the party, and in recent time we have had names like Djames Braun, Johnny Deluxe and Power Corridors visiting. The concerts are

organized by our volunteer bookers, and conducted with a combination of volunteer crew and staff bartenders, security guards and wardrobe people - common to all involved parties are that they all are students at DTU.

Events

In the S-House we do not only arrange concerts. There are also held hangover bingo and super bowl event, to mention some. The premises are also frequently loaned out to info events, Christmas parties, beer pong tournaments and much more. The premises can be used for much, and if you have a good idea, please contact shusformand@pf.dk.

Volunteer at the S-House

The S-House is always in need of competent people - both as bartenders, crew, technicians or something else we have not yet disco-

vered that we lack. So if you have a natural interest in arranging and running concerts and other major events you are always welcome to one of our lunch meetings on Fridays in the lunch break. Here you can have a slice of cake and a chat about the forthcoming work in the S-House. If you do not have the opportunity to participate in a meeting, you can also always contact the head of S-huset Martin Nielsen at shusformand@pf.dk or tel . 77 42 44 92 .



PubQuiz

If you are happy to quiz then the PupQuiz in Kælderbaren might be something for you! You make a team with some friends (max 4 at a team). PubQuiz are held every second Monday of the semester.

Otherwise, the rules are:

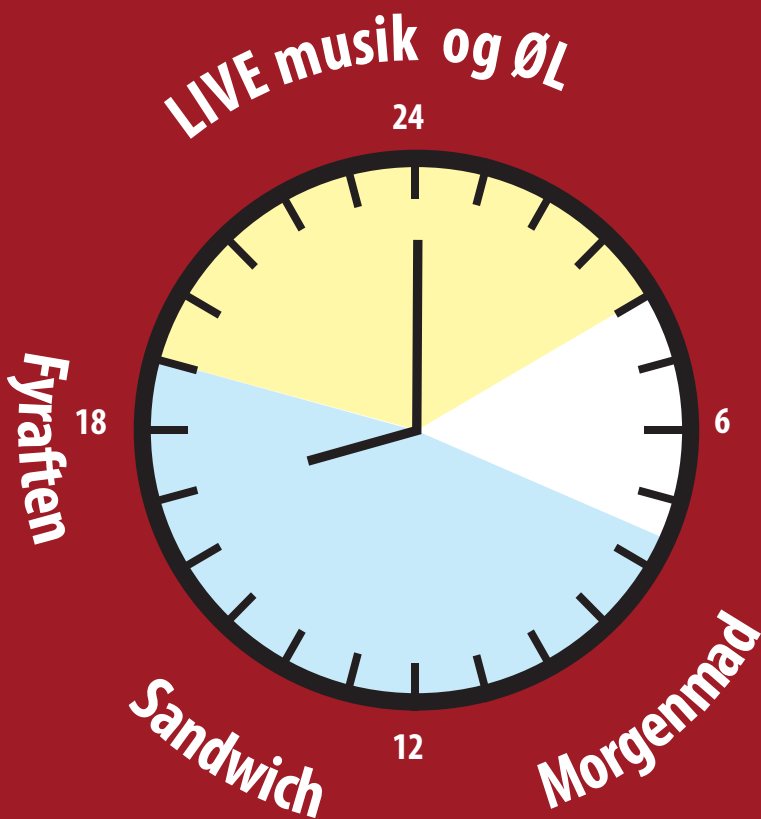
- It costs 20 kr . Per . team - the pot goes to the winner
- 3 rounds of 10 questions
- No use of smart phones
- Best answer to the BONUS question al rewards 4 shots.

The topics vary greatly, some examples include:

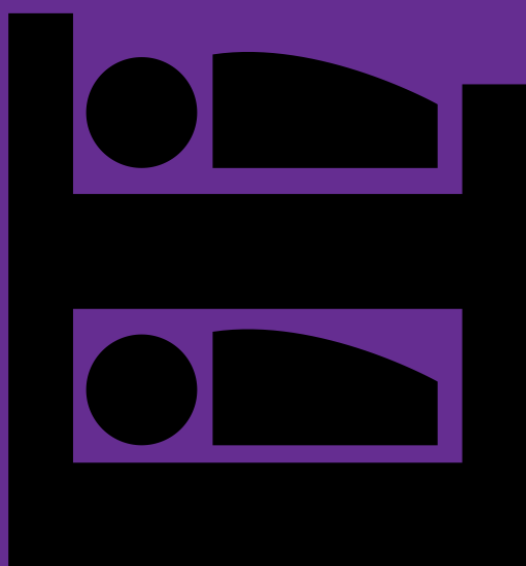
- Tradition and faith
- Space
- Movies and TV
- Mythology

Follow on Facebook for more information:
[PubQuiziKaelderbaren](#)

Der er altid noget at lave i
Kaffestuen og Kælderbaren



S-HUSET.dk
Polyteknisk Forening



8 Dormitories

Many students come from far away when they start at DTU and a new place to live is a must. Are you one of those who are planning to move closer, you can in this chapter read more about the many dorms in and around both Ballerup and Lyngby Campus, and how to apply.

All residents of the dormitories are students, which gives a good social environment and good opportunities to get to know students from other schools as well as from DTU.

Are you interested in any of the dorms you will find more information on pks.dk and at the dorm's own websites. At www.pks.dk you can also free of charge apply for a student accommodation.

Remember that there are many students on the tender to study, and it may therefore be worthwhile to sign up today rather than tomorrow if you need somewhere to live.

Polyteknisk Kollegieselskab (PKS)

Who are PKS?

Polyteknisk Kollegieselskab or colloquially just PKS, is a non-profile private company founded by a group of dormitories associated with DTU. PKS is led by an unpaid board where the majority of the members are selected from student councils and residents' dorms, ensuring student influence on the dorms and how they are administered.

PKS manages most dorms associated with DTU and has an office in the Student Center, located on the 1st floor above the S-House.

What does PKS offer you?

PKS offers 1,622 single rooms and 185 double rooms, most of which are located within 5 km from DTU Lyngby. If you want to move closer to your current or future study place or there are changes in your current housing situation - if you want to move in with your boyfriend, PKS can provide you with information on waiting lists for the individual places.

How do I get a dorm room?

In order to be assigned a room, you must be signed up on our site www.pks.dk where you must complete an application form to be signed up for a room. In order to be considered for a dorm room, you should be under a state financed education or have a training agreement, as for example a craftsman education.

How do I reach PKS?

Most questions you may have will be answered on our website www.pks.dk. You are also welcome to contact us at:

pks@pks.dk or 45 25 92 70

Our address are:

Anker Engelunds Vej 1, building. 101E

2800 Kgs. Lyngby.

Our office hours are:

Monday: 10.00 – 15.00

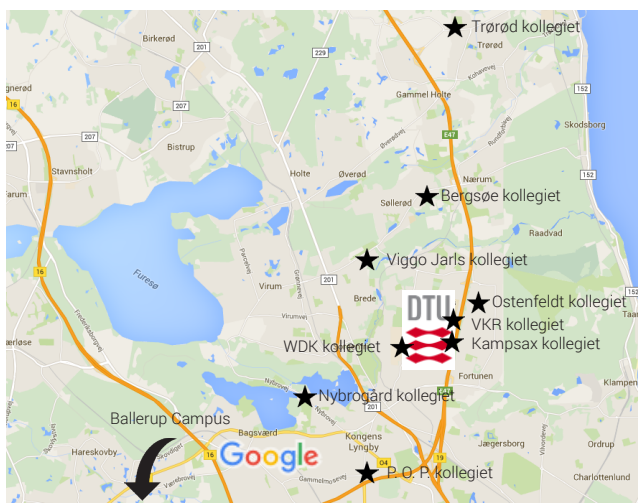
Tue-thursday: 8.00 - 15.00

Friday: 8.00 – 13.00

Dormitories around Lyngby Campus

Around Lyngby Campus there are 9 dorms, as seen on the map below. At the dorms both students from DTU and other educational institutions live. Rent prices

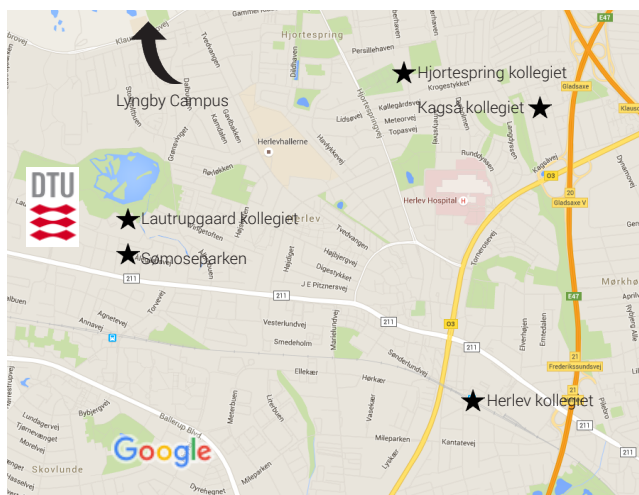
ranges between approximately 2,300 and 4.000kr . In the e-book you can read more about the different dorms, view pictures and get more information .



Dormitories around Ballerup Campus

Around Ballerup Campus there are 5 dorms, as seen on the map below. At the dorms both students from DTU and other educational institutions live. Rent prices

ranges between approximately 2,300 and 4.000kr . In the e-book you can read more about the different dorms, view pictures and get more information .



Kollegie Konsulent Ordningen (KKO)

What is KKO?

Kollegie Konsulent Ordningen (KKO - The Collegiate Consulting program) is a consulting service that works with support, advice and development in relation to anything that might show up in student life. KKO was founded in 1977 and are located at DTU Lyngby Campus. It is linked to dorms around DTU Lyngby. Today, the dorms Bergsøe, P.O. Pedersen and Kampsax are members.

Who are KKO?

KKO is led by a development consultant Lotte Kristensen, who has been with the DTU's study for 30 years. Additionally KKO consists of a number of social consultants with different expertise and competences.

Furthermore KKO has a wide network of former students and resource persons with extensive experience and knowledge. KKO is independently managed by a board composed of residents from member dormitories and PF.

What does KKO do?

For many, the student years are a great time full of learning, new experiences and good relationships. But the high pace and pressure of expectations may suddenly get the everyday life to crack and you may need a helping hand. Most tend to face problems themselves or ask their sweetheart, friends and family for advice, but sometimes it's nice to be able to talk about it with a third neutral person who has great insight into student life around the dorms.



Very specifically KKO can help with everything from advice on writing a good job- or internship application to the crisis and psychological support, as well as everything you can imagine in between. We work with both individual and group related issues and therefore come around every case in a very individual way that differs from other social services. In addition, we also work with the special social

environment and unity that characterises dormitory life.

How do I reach KKO?

KKO's office is located in the Student Center in building 101E at Lyngby Campus (1st floor). Consultations are done by appointment, and can be arranged by mail: kko@kko.dtu.dk. Lotte can also be contacted on telephone 4042 4454.



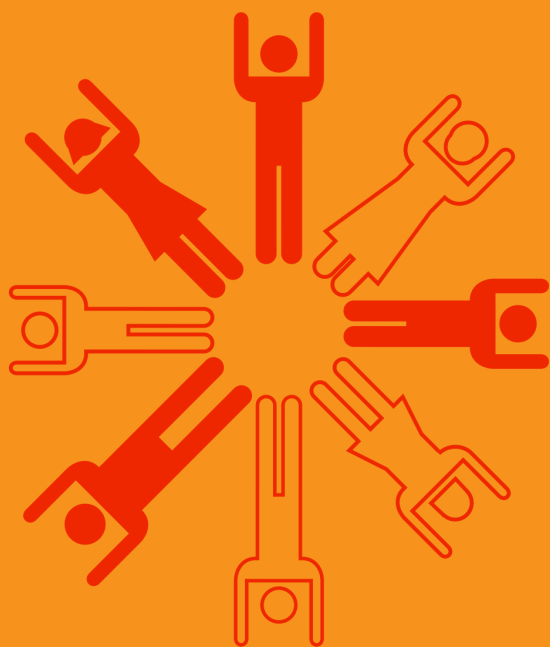


**SEE YOUR IDEAS
COME TO LIFE**
(WE'LL GIVE YOU
THE OPPORTUNITIES)

www.student.ramboll.com

RAMBOLL

WITH 13,000 ENGINEERS, DESIGNERS AND CONSULTANTS, WE
CREATE SUSTAINABLE SOLUTIONS WITHIN BUILDINGS, TRANSPORT,
PLANNING & URBAN DESIGN, WATER, ENVIRONMENT & HEALTH,
ENERGY, OIL & GAS AND MANAGEMENT CONSULTING.



9 Clubs & Organisations

Clubs and organizations at DTU

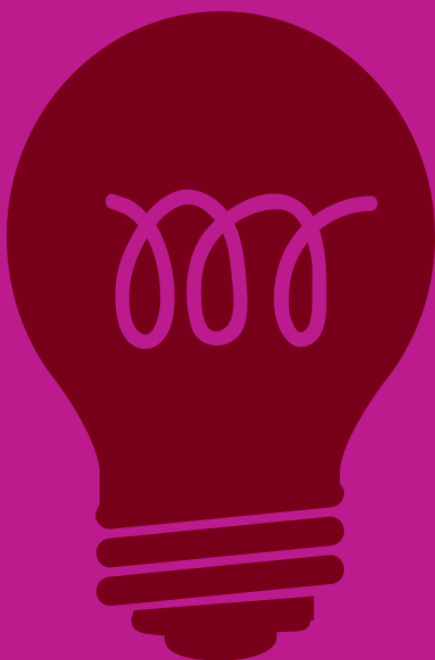
In the e-book you can read about the many clubs, organisations and associations that exist at DTU - and there are a lot!

These include a ceramic club, a wood and metal club and board games club just to mention a few. You can meet these clubs at the PF Open House between the 25 and 26 of September. If your hobby is not represented, then there is always the possibility to start a new club, contact PF's board for more information at: bestyrelsen@pf.dk.

Additionally, there are many opportunities to stay active, including the gym, yoga, sailing or one of the other associations under DTU sport. You can read more about the associations on www.sport.dtu.dk.

Then there is the opportunity to engage in one of the organizations which are based on voluntary work and covers for example studying abroad, internship opportunities and building bridges between students and businesses.

In addition to this there is the opportunity to participate in the PF HUMOR revue that will show in week 12. Or PF Skiing trip which takes place in the week 4!



10 Nice to Know

Tips and good advice before you start your studies

When starting a new education, it might feel like a whole new world, where you have to learn everything from the beginning - and it's quite understandable!

This section gives you tips, useful links and Facebook groups that will make your study time a little easier.

You will also find a DTU A-Z that helps you understand the DTU terminology a little more thoroughly so you are prepared for your study - both for teaching and the more social moments.

To facilitate the transition from pupil to student, you will meet DTU Learning Lab during your first time at DTU. Learning Lab teach learning techniques and planning and can help you get a more structured study life from the beginning.

We hope you will enjoy and use the good advice!

Links/Facebook/Apps

As a student, there is a variety of websites, apps and facebook pages that can help you get an easier everyday life.

Some of the offers listed below may in particular help you make the SU last a bit

longer. But besides the good offers, numerous places gives a student discount - unfortunately you often have to ask for it.

Note that many of them are in Danies

Links

- pf.dk
- ida.dk/medlemsfordele
- overlevpaasu.dk
- pf.dk/Ulykkesforsikring
- studenterguiden.dk
- studiz.dk
- polyteknisk.dk
(Boghandel)
- sdb.dtu.dk
(Studiehåndbogen)

Facebook

- Brugte bøger /
Used books - DTU
- Danmarks Tekniske
Universitet - DTU
- DTU / PF fælles
kørsel til Jylland
- GratisDTU
- IDA for studerende
- PF - Polyteknisk
Forening
- Opslagstavlen DTU //
The Notice Board DTU

Apps

- CampusNet
University System
- Billige bøger
- DTU Guide
- Eksamensangst
- eTilbudsavisen
- Studiz

Other offers

- SAS ung
- Print and binding with
the PF Secretariat

DTU A-Z

Administrationen/The administration office: Here you will find the Study Information Center, the international office and get help with SU questions.

Bachelorgrad/Bachelor's degree: (BSc) Academic degree awarded to the student after having completed a three-year basic education at the university. Equivalent to 180 ECTS points.

Boligstøtte/Housing Benefit A financial grant to pay the rent. Housing benefits can be applied for if you are a tenant in a house with its own kitchen. Read more on www.borger.dk.

CampusNet: DTU's web-based collaboration tool for educators, students and the administration. Here you can find information about the courses you are signed up for.

Databar: DTU has a number of databars with computers that have relevant programs installed.

Dekan/Dean: Head of faculty. DTU has two deans, Martin E. Vigild, Dean of Undergraduate Studies and Student Affairs and Martin P. Bendsøe Dean of Graduate and Ph.D Studies.

Diplomingeniør/Bachelor of Engineering: (BEng) Academic degree awarded

to students that have successfully completed a 3½ year education at the university, including 6 months of practical training. Equivalent to 210 ECTS.

ECTS-point: Is an abbreviation of European Credit Transfer and Accumulation System and is an international point system that indicates the total work for a course. 5 ECTS is equivalent to 9 hours a week for 13 weeks at DTU.

Eksamenstilmelding/Exam register: All course registrations from the 13-week period is transferred to the examinations. You must enroll via CampusNet, if you want to take examinations in other or more courses than those transferred via the course enrollment. For example if you have been sick or need to take an exam one more time due to a failed course.

Erasmus-program: European exchange system that offers support and arranges study abroad and international cooperation with companies.

Fejlmelding/Notification of a fault: If a malfunction is observed in a building, on a building installation, a road etc., please send an error message electronically at : www.fejlmeld.cas.dtu.dk.

FindIt: DTU FindIt is DTU's online library service where you can access all the literature within the fields of study researched and taught at DTU - mainly natural and technical sciences.

Institut/Department: The departments plan and organize research and teaching within their field and collaborate on all study programs and lines within the department.

KABS: KABS is a Danish abbreviation, which translated means the Coordination of the Undergraduate Study start. There are 29 KABS, each responsible for a study program, an introduction trip and a group of vectors.

Kagemøde/Cake meeting: As a freshman you will be allocated into a vector group. The vector group have a cake meeting once a week the first semester. Here, relevant information will be provided as well as an opportunity to ask questions and socialize.

Kandidatgrad/Master's degree: (MSc) Academic degree achieved after two years of study, equivalent to 120 ECTS.

Kursusbasen/The Course Base: The Course Base is found through CampusNet, and is the complete list of DTU's courses.

Kursusevaluering/Course evaluation: At the end of each course, a course evaluation

is carried out. This is used by the professors, but also by the departments. The course evaluations are reviewed by students in collaboration with the department to ensure the best possible education.

Kursustilmelding/Course registration: You will automatically be signed up for your courses at the first semester at DTU, but afterwards you need to register yourself through the Course Registration at CampusNet.

Legater/Scholarship or donation: A donation is an amount of money given to a certain purpose. Donations can be applied for with different purposes, such as studying abroad.

Merit/Qualification: Merit or qualification is a term for the student's ability to transfer test results from one program to another.

Origo: Is the middle of Lyngby Campus, where the parking lots and Anker Engelundsvej crosses.

Polyteknisk Forening: (PF) The student union at DTU.

Ph.D. : A three-year long research program that can be applied for after attaining a Master's degree. The academic degree is awarded after the defense of a Ph.D. thesis.

Rektor/President: The President of DTU is in charge of the daily operation of the

University and has the overall responsibility towards the Board. The President directs the management.

PF Sekretariatet/

PF Secretariat: PF has a secretariat at both campuses where you can get help and answers to almost any question you might have.

Semester: The academic year at DTU is divided into two semesters. A semester consists of a 13-week period, followed by an exam period and a 3-week period.

S-Huset/The S-House:

The S-House is the common name of PF's student center, where much of the social life at DTU is happening. The S-House operates several cafes where you at student-friendly prices can buy coffee, sandwiches and what else you need to get through the day. There is also billiards and games, and always a place to hang out after class.

Studiestarten/Freshmen

Orientation: Is a common term for the first period for the Freshmen that are arranged by KABS and vectors.

Studieplanlægger/Study

Planner: At the Course Base you will find the Study Planner, where you can plan your courses and get an overview of your semesters.

Studieråd/Student Council:

PF has established a number of Student Councils who

represent one or more fields of study at DTU. The Student Councils generally have a meeting once a month, and the meetings are open for all DTU students.

SU: Is Danish abbreviation for State Educational Support and is a financial support for students. To receive SU it is a requirement that the education is SU-justified and that a number of application criteria are met.

SU-lån/State Education

Loan: The time as a student can be a financial challenge. It is therefore possible to take a student loan as long as you are on SU.

Udvekslingsophold/Student Exchange:

There are great opportunities to take a part of your education abroad. DTU has exchange agreements around the world, and the exchange is free through DTU.

Vektor/Vector:

Denmark's best Freshmen Orientation would not exist if not for the vectors. The vectors arrange the Introduction Day and Trip with KABS.

LearningLab

What is LearningLab DTU

The purpose of LearningLab DTU is to inspire and support DTU professors, students and management of the ongoing quality of education, teaching and learning at DTU.

Through our activities we support development, innovation and exploration of teaching, which puts student learning at the center. We help to develop the educational environment at DTU, including professional teaching skills, and to support the recognition and disclosure of development of engineering didactics internally and externally.

Our activities are based on proven knowledge of teaching practice as well as Danish and international research in university teaching

LearningLab DTU also organize training in study introduction - study engineering, planning strategy and more. This training is offered as a part of the students' courses of the 1st and 2nd semester, in cooperation with the responsible head of studies at the departments.

E-learning at DTU

Incorporation of e-learning in the educational programs at DTU is an explicit goal in DTU's strategy 2014-2019.

DTU LearningLab works with this incorporation.

Contact

Manager Birgitte Lund Christiansen can be contacted at tel: 4525 7345 or email: blc@llab.dtu.dk



CREW

Kunne du tænke dig at komme bag om
koncerterne på DTU?

Vil du opleve festerne
fra en anden vinkel?

Har du lyst til at være en del af et
fantastisk fællesskab?



I CREW er man en del af koncerterne og
arrangementerne i S-Huset.

Der er CREW-møde hver fredag kl 12.15 i
Kælderbaren, så kom forbi til et stykke kage.

*fordi Rock 'n' Roll betyder noget for
studiemiljøet*

Map of DTU Ballerup Campus

